

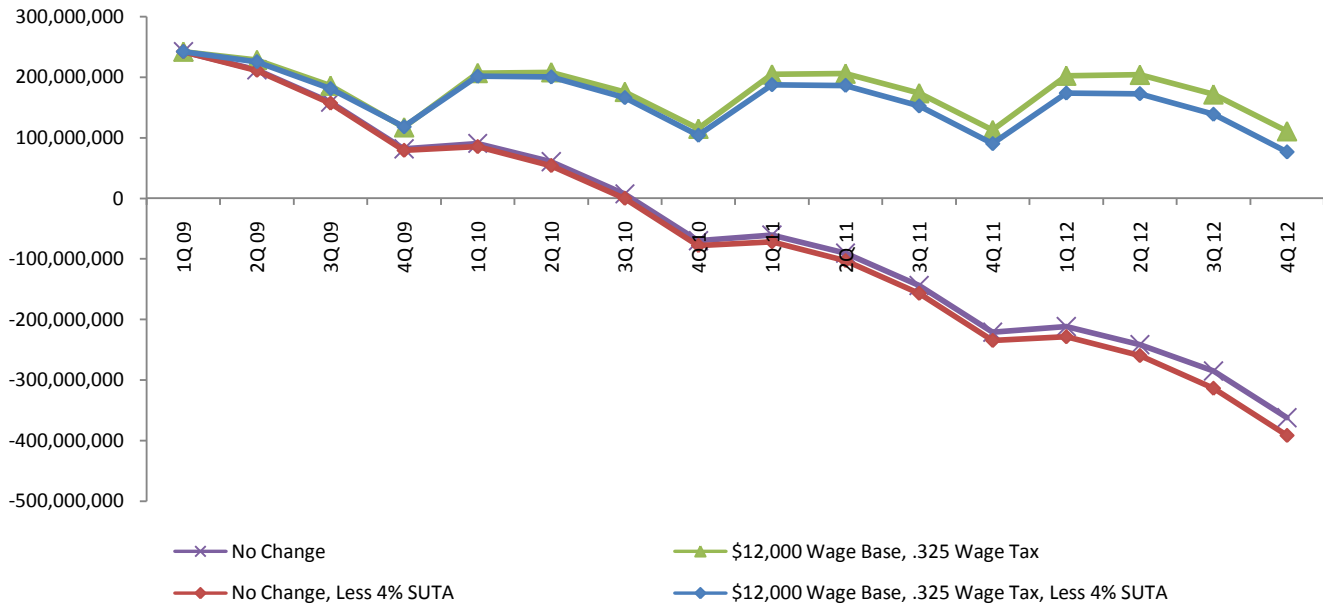
Taxable Wage Base Scenario v. Insolvency Tax Scenario, Less 4% SUTA

BENEFITS TO BE PAID

		Taxable Wage Base				
%	Insolvency	\$8,000	\$9,000	\$10,000	\$11,000	\$12,000
0	\$0	\$136,581,384	\$154,336,963	\$170,726,730	\$188,482,309	\$204,872,076
0.05	\$0	\$136,581,384	\$154,336,963	\$170,726,730	\$188,482,309	\$204,872,076
0.1	\$0	\$136,581,384	\$154,336,963	\$170,726,730	\$188,482,309	\$204,872,076
0.15	\$0	\$136,581,384	\$154,336,963	\$170,726,730	\$188,482,309	\$204,872,076
0.2	\$0	\$136,581,384	\$154,336,963	\$170,726,730	\$188,482,309	\$204,872,076
0.25	\$0	\$136,581,384	\$154,336,963	\$170,726,730	\$188,482,309	\$204,872,076
0.3	\$0	\$136,581,384	\$154,336,963	\$170,726,730	\$188,482,309	\$204,872,076
0.325	\$0	\$136,581,384	\$160,317,096	\$176,706,863	\$194,462,442	\$210,852,209
0.35	\$0	\$136,581,384	\$154,336,963	\$170,726,730	\$188,482,309	\$204,872,076
0.4	\$0	\$136,581,384	\$154,336,963	\$170,726,730	\$188,482,309	\$204,872,076
0.45	\$0	\$136,581,384	\$154,336,963	\$170,726,730	\$188,482,309	\$204,872,076
0.5	\$0	\$136,581,384	\$154,336,963	\$170,726,730	\$188,482,309	\$204,872,076
0.55	\$0	\$136,581,384	\$154,336,963	\$170,726,730	\$188,482,309	\$204,872,076
0.6	\$1	\$136,581,385	\$154,336,964	\$170,726,731	\$188,482,310	\$204,872,077
0.65	\$1	\$136,581,385	\$154,336,964	\$170,726,731	\$188,482,310	\$204,872,077

4.0% UE	164,000,000
4.5% UE	185,320,000
5.0% UE	205,000,000
5.5% UE	226,320,000
6.0% UE	246,000,000
6.5% UE	267,320,000
7.0% UE	287,000,000
7.5% UE	308,320,000
8.0% UE	328,000,000

Analysis of 4% Less SUTA Contributions v. 08 Constant SUTA Contributions in No Change v. Raising Wage Base \$12,000 and Impose .325 Wage Tax

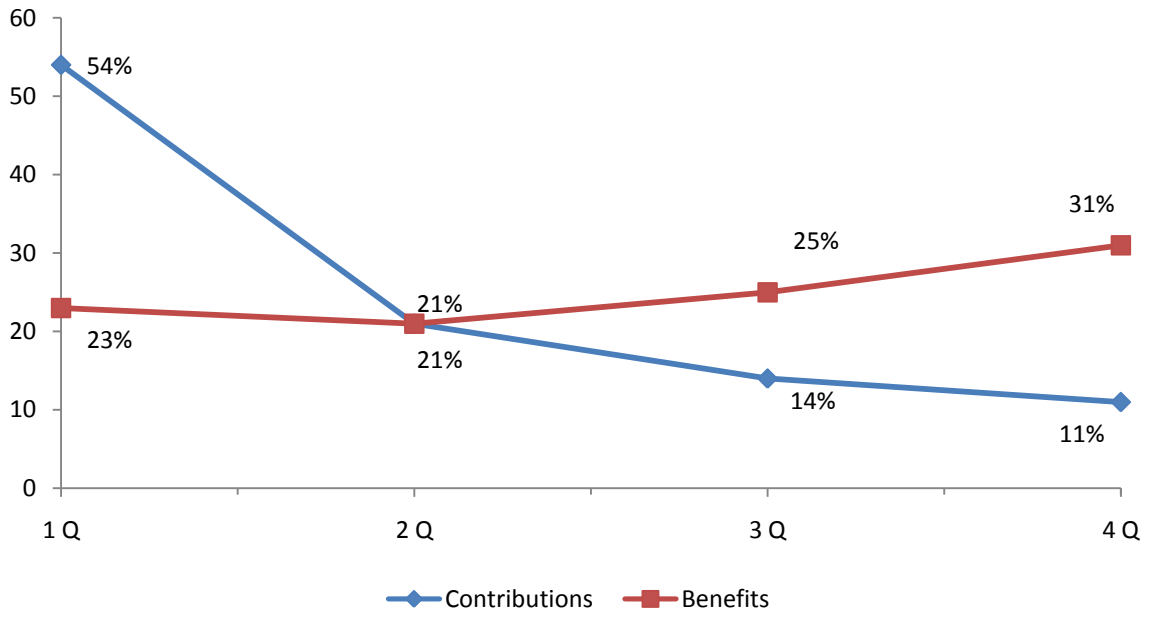


UI Trust Fund Cash Flow Analysis

Raise Taxable Wage Base \$12,000, Impose .325 Wage Tax Using Governor's Triggers, 8% UE Rate, Less 4% SUTA

		1 Q 2009	2 Q 2009	3 Q 2009	4 Q 2009
Trust Fund Projections	12/31/2008				
Trust Fund Contributions		\$76,186,481	\$28,857,246	\$19,283,107	\$15,572,008
Trust Fund Interest		\$1,887,251	\$2,003,198	\$2,087,389	\$1,938,357
Trust Fund Withdrawals		\$68,491,394	\$61,810,716	\$75,471,434	\$95,379,962
Taxable Wage Base Contributions		\$0	\$14,341,044	\$9,560,697	\$7,511,976
Insolvency Tax Contributions		\$0	\$0	\$0	\$7,511,976
Trust Fund Balance	\$232,319,248	\$241,901,586	\$225,292,358	\$180,752,117	\$117,906,472
		1 Q 2010	2 Q 2010	3 Q 2010	4 Q 2010
Trust Fund Projections	12/31/2009				
Trust Fund Contributions		\$73,139,022	\$28,587,246	\$19,283,107	\$15,572,008
Trust Fund Interest		\$1,464,126	\$2,052,751	\$2,137,541	\$1,989,117
Trust Fund Withdrawals		\$68,491,394	\$61,810,716	\$75,471,434	\$95,379,962
Taxable Wage Base Contributions		\$40,301,312	\$15,672,732	\$10,448,488	\$8,209,526
Insolvency Tax Contributions		\$36,876,972	\$14,341,044	\$9,560,697	\$7,511,976
Trust Fund Balance	\$117,906,472	\$201,196,510	\$200,039,567	\$165,997,966	\$103,900,631
		1 Q 2011	2 Q 2011	3 Q 2011	4 Q 2011
Trust Fund Projections	12/31/2010				
Trust Fund Contributions		\$73,139,022	\$28,587,246	\$19,283,107	\$15,572,008
Trust Fund Interest		\$1,515,500	\$2,104,746	\$2,190,166	\$2,042,378
Trust Fund Withdrawals		\$68,491,394	\$61,810,716	\$75,471,434	\$95,379,962
Taxable Wage Base Contributions		\$40,301,312	\$15,672,732	\$10,448,488	\$8,209,526
Insolvency Tax Contributions		\$36,876,972	\$14,341,044	\$9,560,697	\$7,511,976
Trust Fund Balance	\$103,900,631	\$187,242,043	\$186,137,095	\$152,148,119	\$90,104,045
		1 Q 2012	2 Q 2012	3 Q 2012	4 Q 2012
Trust Fund Projections	12/31/2011				
Trust Fund Contributions		\$73,139,022	\$28,587,246	\$19,283,107	\$15,572,008
Trust Fund Interest		\$1,569,406	\$2,159,304	\$2,245,384	\$2,042,378
Trust Fund Withdrawals		\$68,491,394	\$61,810,716	\$75,471,434	\$95,379,962
Taxable Wage Base Contributions		\$40,301,312	\$15,672,732	\$10,448,488	\$8,209,526
Insolvency Tax Contributions		\$36,876,972	\$14,341,044	\$9,560,697	\$7,511,976
Trust Fund Balance	\$90,104,045	\$173,499,363	\$172,448,973	\$138,515,215	\$76,471,141

**Percent of Contributions and Benefits Entering & Exiting
UI Trust Fund, by Quarter (2008)**



States Ranking of Average Weekly Benefit

Mississippi	\$195.98
Alabama	\$203.61
Alaska	\$209.92
Louisiana	\$213.75
Arizona	\$222.14
Tennessee	\$224.98
Florida	\$239.22
South Carolina	\$243.95
Nebraska	\$248.62
Missouri	\$252.99
West Virginia	\$254.39
South Dakota	\$255.63
Delaware	\$260.50
Montana	\$269.03
New Hampshire	\$273.00
Maine	\$273.20
Arkansas	\$274.47
Georgia	\$278.33
Idaho	\$278.59
Wisconsin	\$281.30
Virginia	\$285.41
New Mexico	\$285.80
District of Columbia	\$289.88
Oklahoma	\$291.90
North Carolina	\$296.68
Nevada	\$299.96
Indiana	\$303.21
United_States	\$306.19
Michigan	\$307.06
Vermont	\$308.60
Maryland	\$309.97
Kentucky	\$310.98
New York	\$311.46
Ohio	\$311.84
California	\$312.33
Oregon	\$312.88
North Dakota	\$313.87
Texas	\$314.73
Utah	\$318.70
Iowa	\$319.18
Virgin Islands	\$320.90
Illinois	\$326.06
Wyoming	\$328.34
Kansas	\$338.59
Connecticut	\$342.06
Pennsylvania	\$344.62
Colorado	\$352.16
Minnesota	\$353.80
Washington	\$366.67
Rhode Island	\$380.12
New Jersey	\$389.61
Massachusetts	\$405.64
Hawaii	\$419.28

